

**Sturgeon Capture Records;  
NEFOP+ASM, 2006-2010; NEAMAP, 2007-2011;  
NMFS Inshore Trawl, 1972-2011; ME-NH Inshore Trawl, 2000-2011**

**MONTH**

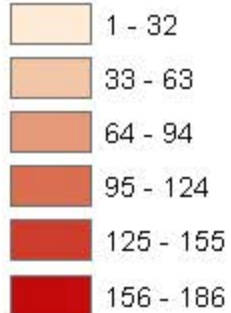


**Average Annual  
Time Absent in  
Days, 2006-2010**

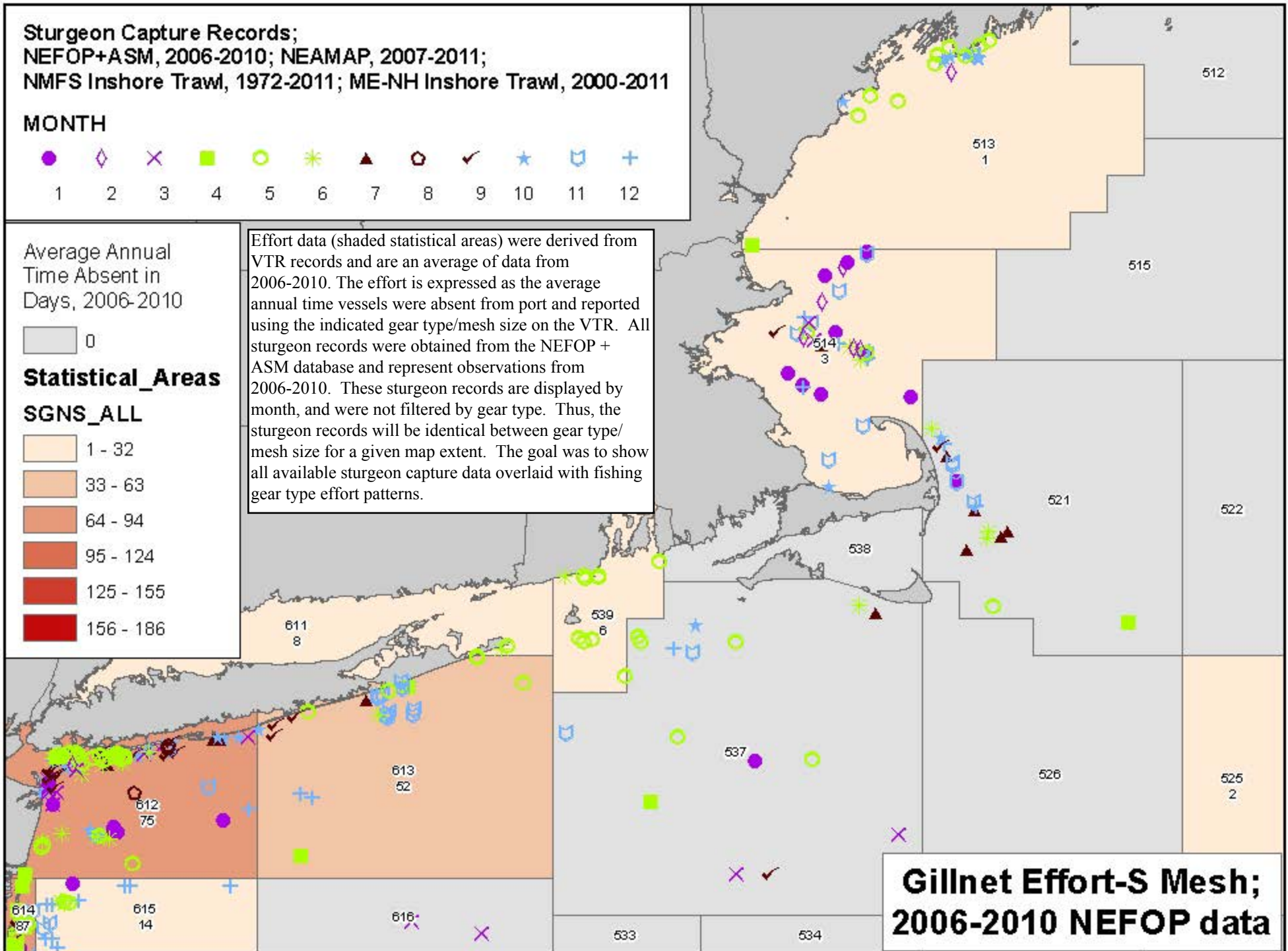


**Statistical\_Areas**

**SGNS\_ALL**



Effort data (shaded statistical areas) were derived from VTR records and are an average of data from 2006-2010. The effort is expressed as the average annual time vessels were absent from port and reported using the indicated gear type/mesh size on the VTR. All sturgeon records were obtained from the NEFOP + ASM database and represent observations from 2006-2010. These sturgeon records are displayed by month, and were not filtered by gear type. Thus, the sturgeon records will be identical between gear type/mesh size for a given map extent. The goal was to show all available sturgeon capture data overlaid with fishing gear type effort patterns.



**Gillnet Effort-S Mesh;  
2006-2010 NEFOP data**

**Sturgeon Capture Records;  
NEFOP+ASM, 2006-2010; NEAMAP, 2007-2011;  
NMFS Inshore Trawl, 1972-2011; ME-NH Inshore Trawl, 2000-2011**

**MONTH**



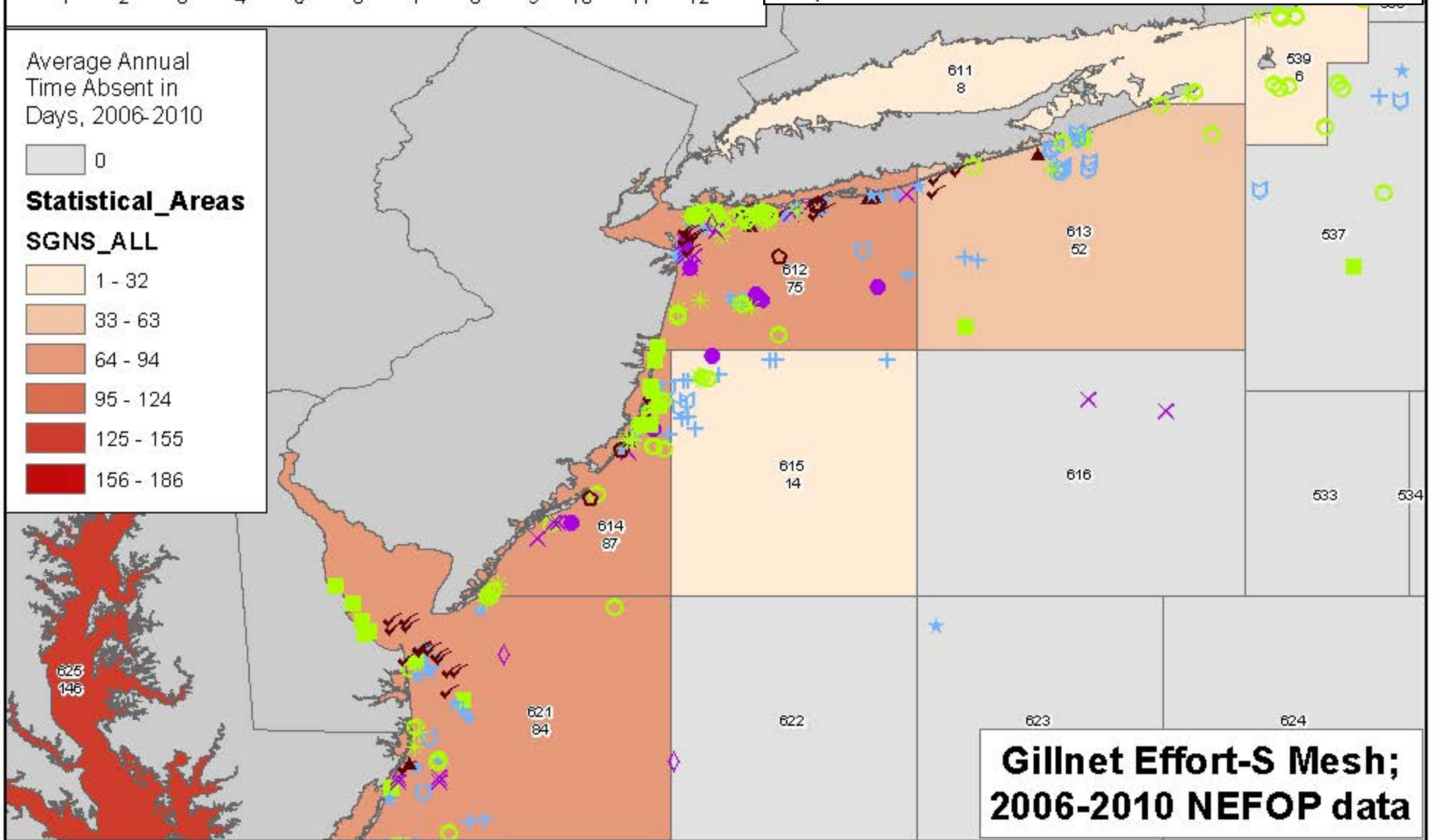
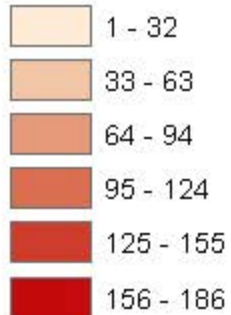
Effort data (shaded statistical areas) were derived from VTR records and are an average of data from 2006-2010. The effort is expressed as the average annual time vessels were absent from port and reported using the indicated gear type/mesh size on the VTR. All sturgeon records were obtained from the NEFOP + ASM database and represent observations from 2006-2010. These sturgeon records are displayed by month, and were not filtered by gear type. Thus, the sturgeon records will be identical between gear type/mesh size for a given map extent. The goal was to show all available sturgeon capture data overlaid with fishing gear type effort patterns.

Average Annual  
Time Absent in  
Days, 2006-2010



**Statistical\_Areas**

**SGNS\_ALL**



**Gillnet Effort-S Mesh;  
2006-2010 NEFOP data**

**Sturgeon Capture Records;  
NEFOP+ASM, 2006-2010; NEAMAP, 2007-2011;  
NMFS Inshore Trawl, 1972-2011; ME-NH Inshore Trawl, 2000-2011**

**MONTH**

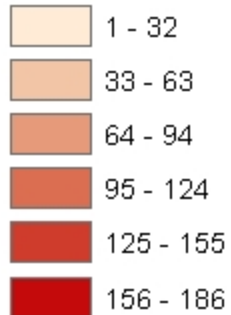


**Average Annual  
Time Absent in  
Days, 2006-2010**

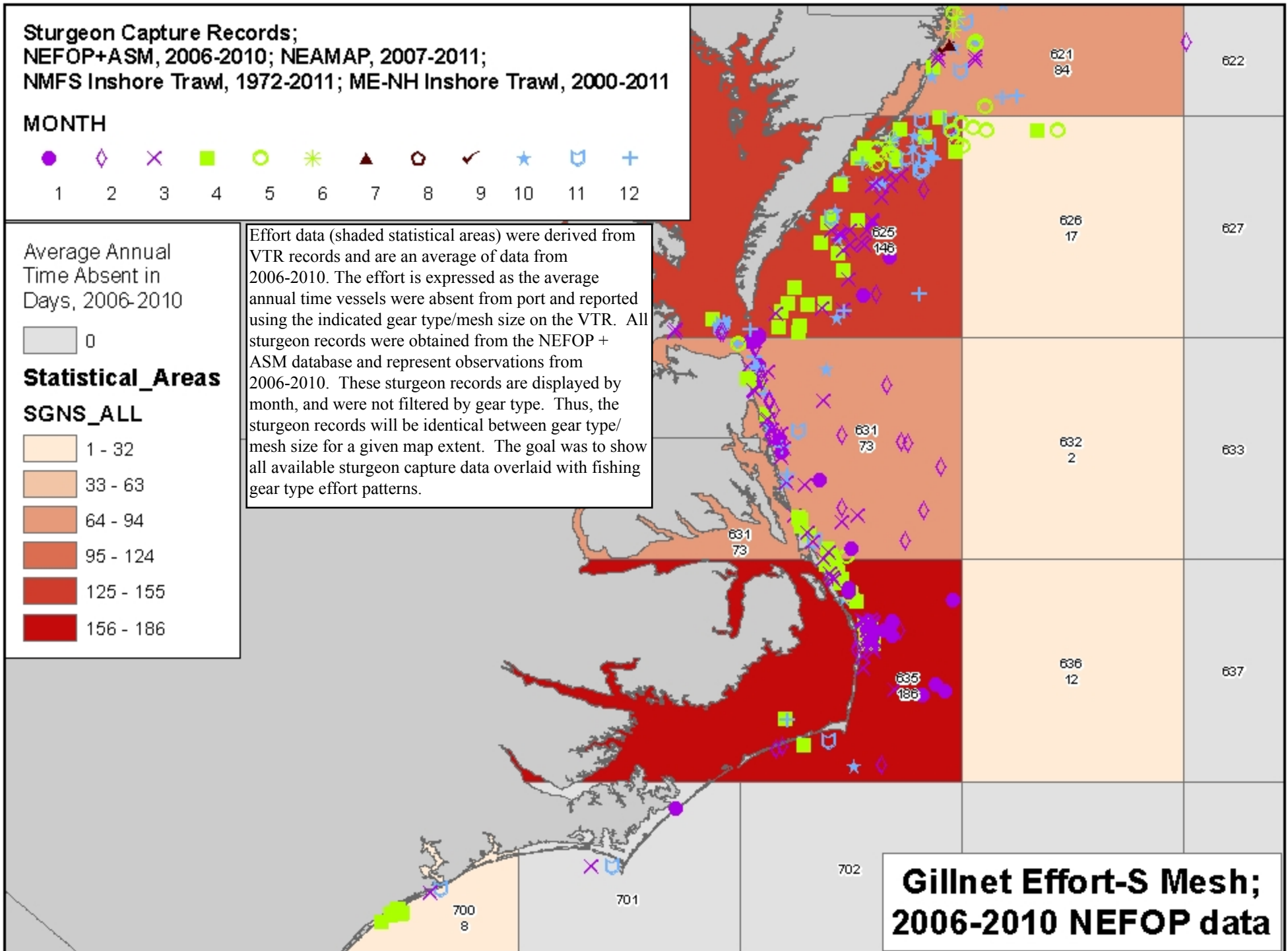


**Statistical\_Areas**

**SGNS\_ALL**



Effort data (shaded statistical areas) were derived from VTR records and are an average of data from 2006-2010. The effort is expressed as the average annual time vessels were absent from port and reported using the indicated gear type/mesh size on the VTR. All sturgeon records were obtained from the NEFOP + ASM database and represent observations from 2006-2010. These sturgeon records are displayed by month, and were not filtered by gear type. Thus, the sturgeon records will be identical between gear type/mesh size for a given map extent. The goal was to show all available sturgeon capture data overlaid with fishing gear type effort patterns.



**Gillnet Effort-S Mesh;  
2006-2010 NEFOP data**

**Sturgeon Capture Records;  
NEFOP+ASM, 2006-2010; NEAMAP, 2007-2011;  
NMFS Inshore Trawl, 1972-2011; ME-NH Inshore Trawl, 2000-2011**

**MONTH**

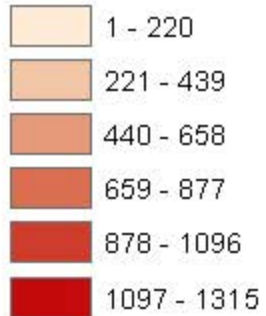


Average Annual  
Time Absent in  
Days, 2006-2010

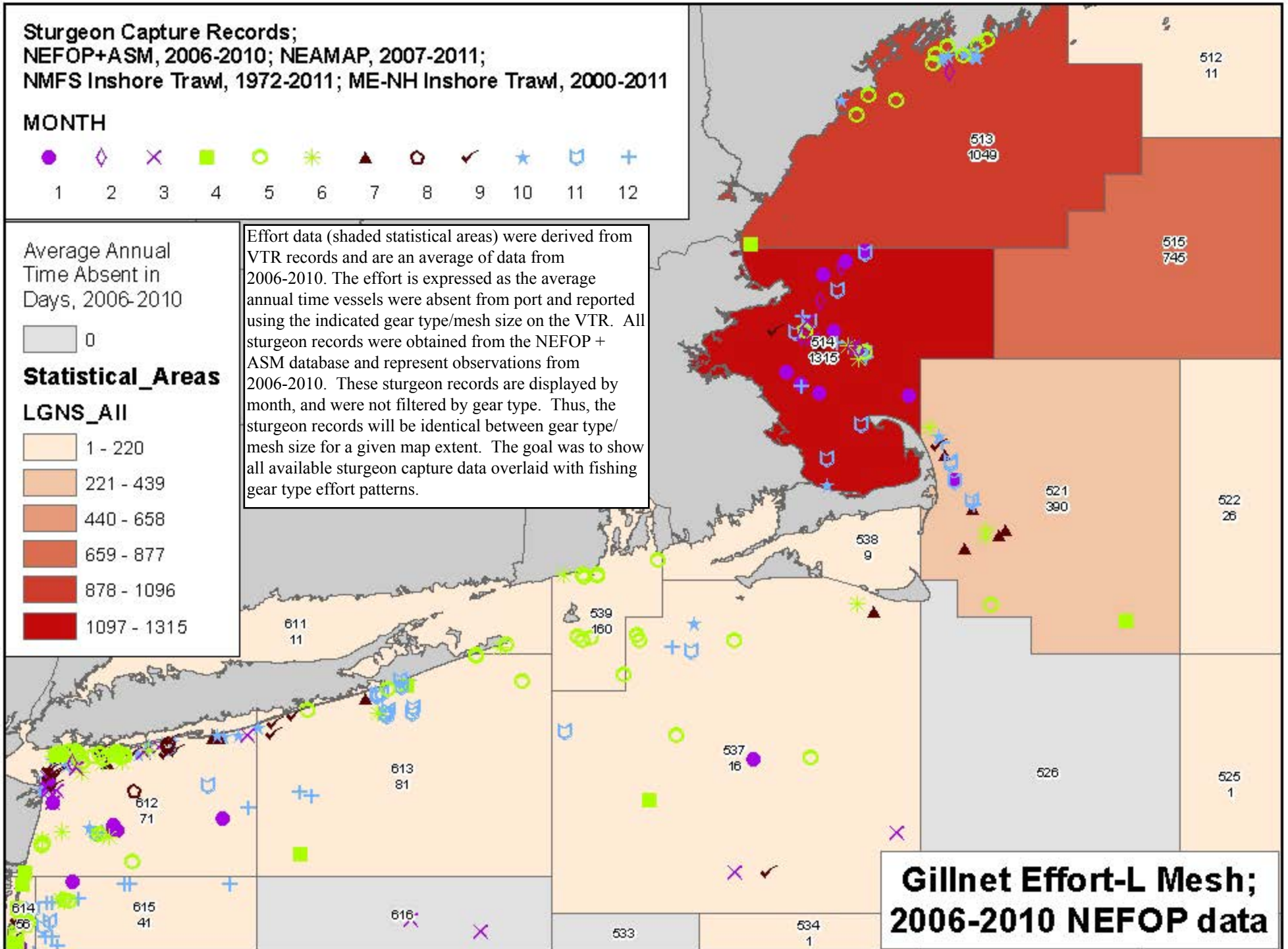


**Statistical\_Areas**

**LGNS\_All**



Effort data (shaded statistical areas) were derived from VTR records and are an average of data from 2006-2010. The effort is expressed as the average annual time vessels were absent from port and reported using the indicated gear type/mesh size on the VTR. All sturgeon records were obtained from the NEFOP + ASM database and represent observations from 2006-2010. These sturgeon records are displayed by month, and were not filtered by gear type. Thus, the sturgeon records will be identical between gear type/mesh size for a given map extent. The goal was to show all available sturgeon capture data overlaid with fishing gear type effort patterns.



**Gillnet Effort-L Mesh;  
2006-2010 NEFOP data**

**Sturgeon Capture Records;  
NEFOP+ASM, 2006-2010; NEAMAP, 2007-2011;  
NMFS Inshore Trawl, 1972-2011; ME-NH Inshore Trawl, 2000-2011**

**MONTH**



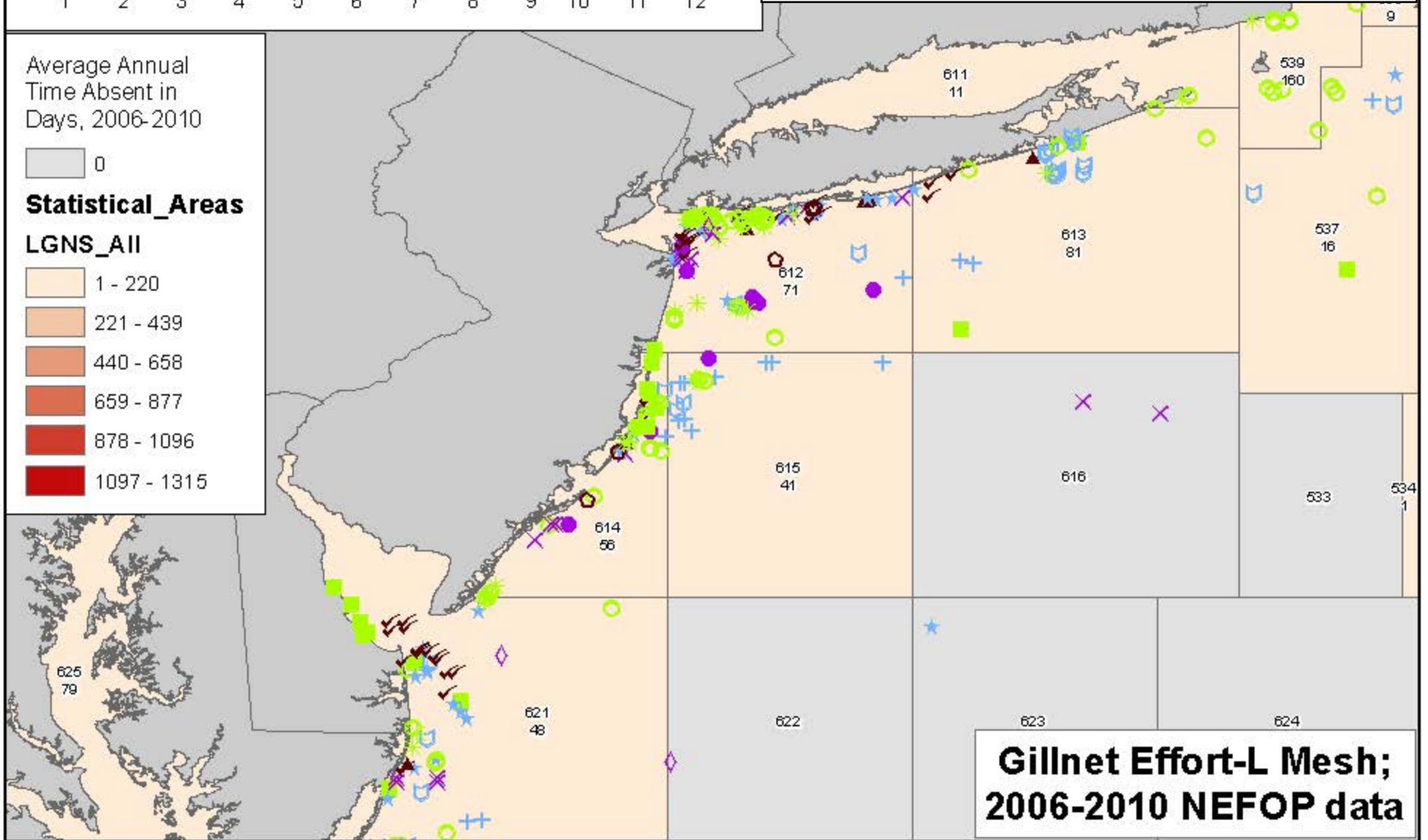
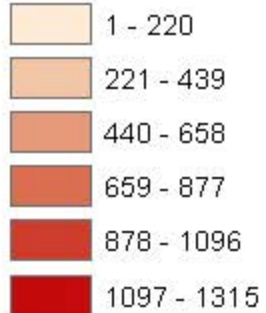
Effort data (shaded statistical areas) were derived from VTR records and are an average of data from 2006-2010. The effort is expressed as the average annual time vessels were absent from port and reported using the indicated gear type/mesh size on the VTR. All sturgeon records were obtained from the NEFOP + ASM database and represent observations from 2006-2010. These sturgeon records are displayed by month, and were not filtered by gear type. Thus, the sturgeon records will be identical between gear type/mesh size for a given map extent. The goal was to show all available sturgeon capture data overlaid with fishing gear type effort patterns.

Average Annual  
Time Absent in  
Days, 2006-2010



**Statistical\_Areas**

**LGNS\_All**



**Gillnet Effort-L Mesh;  
2006-2010 NEFOP data**

**Sturgeon Capture Records;**  
 NEFOP+ASM, 2006-2010; NEAMAP, 2007-2011;  
 NMFS Inshore Trawl, 1972-2011; ME-NH Inshore Trawl, 2000-2011

**MONTH**

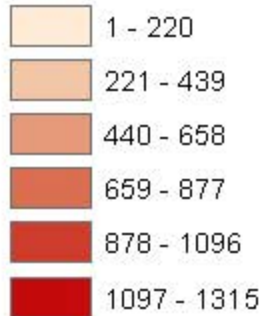


Average Annual  
 Time Absent in  
 Days, 2006-2010

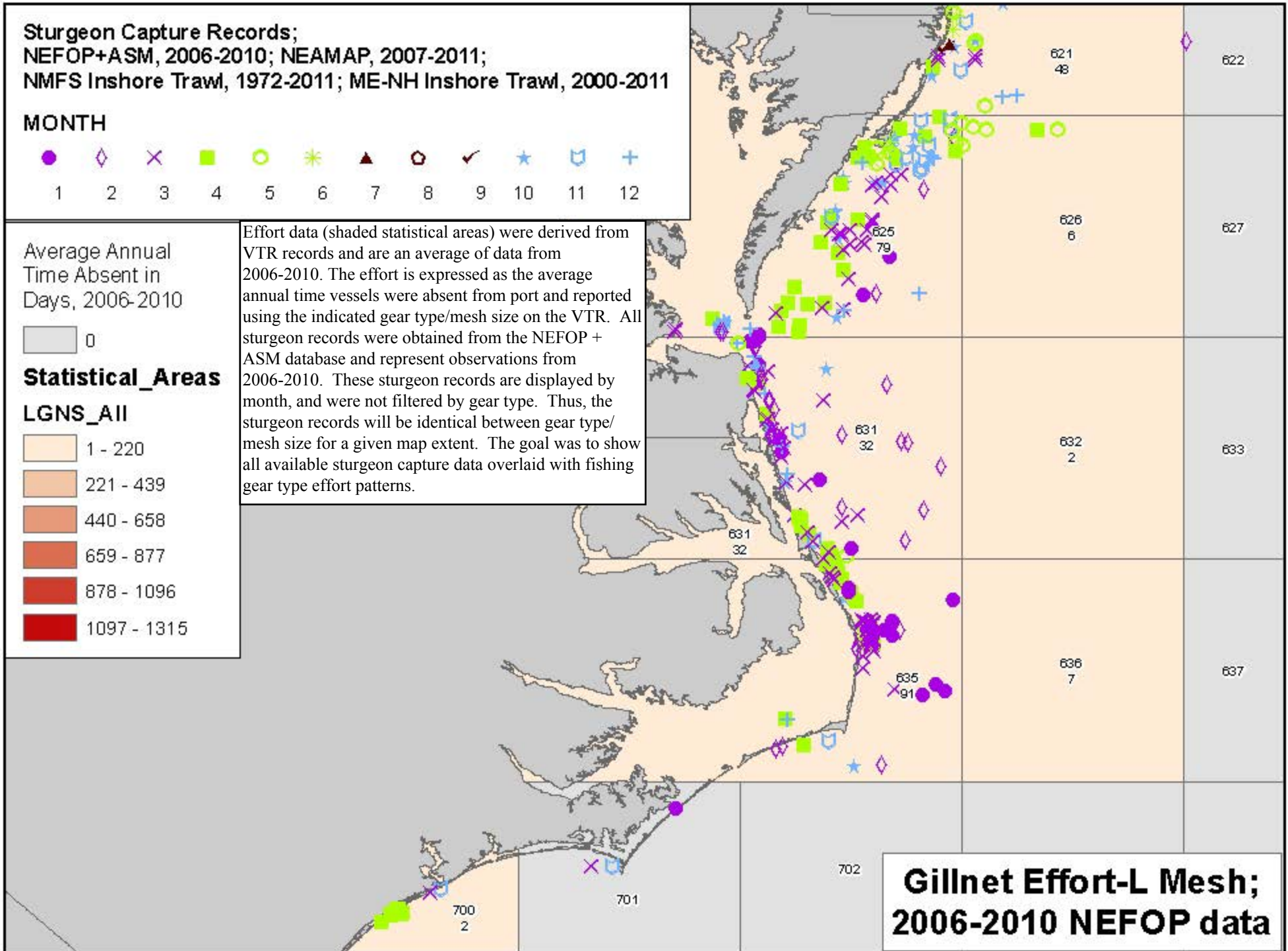


**Statistical\_Areas**

**LGNS\_All**



Effort data (shaded statistical areas) were derived from VTR records and are an average of data from 2006-2010. The effort is expressed as the average annual time vessels were absent from port and reported using the indicated gear type/mesh size on the VTR. All sturgeon records were obtained from the NEFOP + ASM database and represent observations from 2006-2010. These sturgeon records are displayed by month, and were not filtered by gear type. Thus, the sturgeon records will be identical between gear type/mesh size for a given map extent. The goal was to show all available sturgeon capture data overlaid with fishing gear type effort patterns.



**Sturgeon Capture Records;**  
 NEFOP+ASM, 2006-2010; NEAMAP, 2007-2011;  
 NMFS Inshore Trawl, 1972-2011; ME-NH Inshore Trawl, 2000-2011

**MONTH**

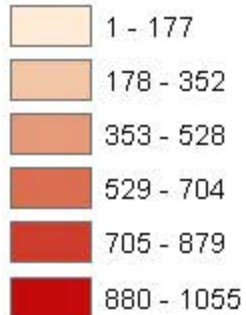


Average Annual  
 Time Absent in  
 Days, 2006-2010

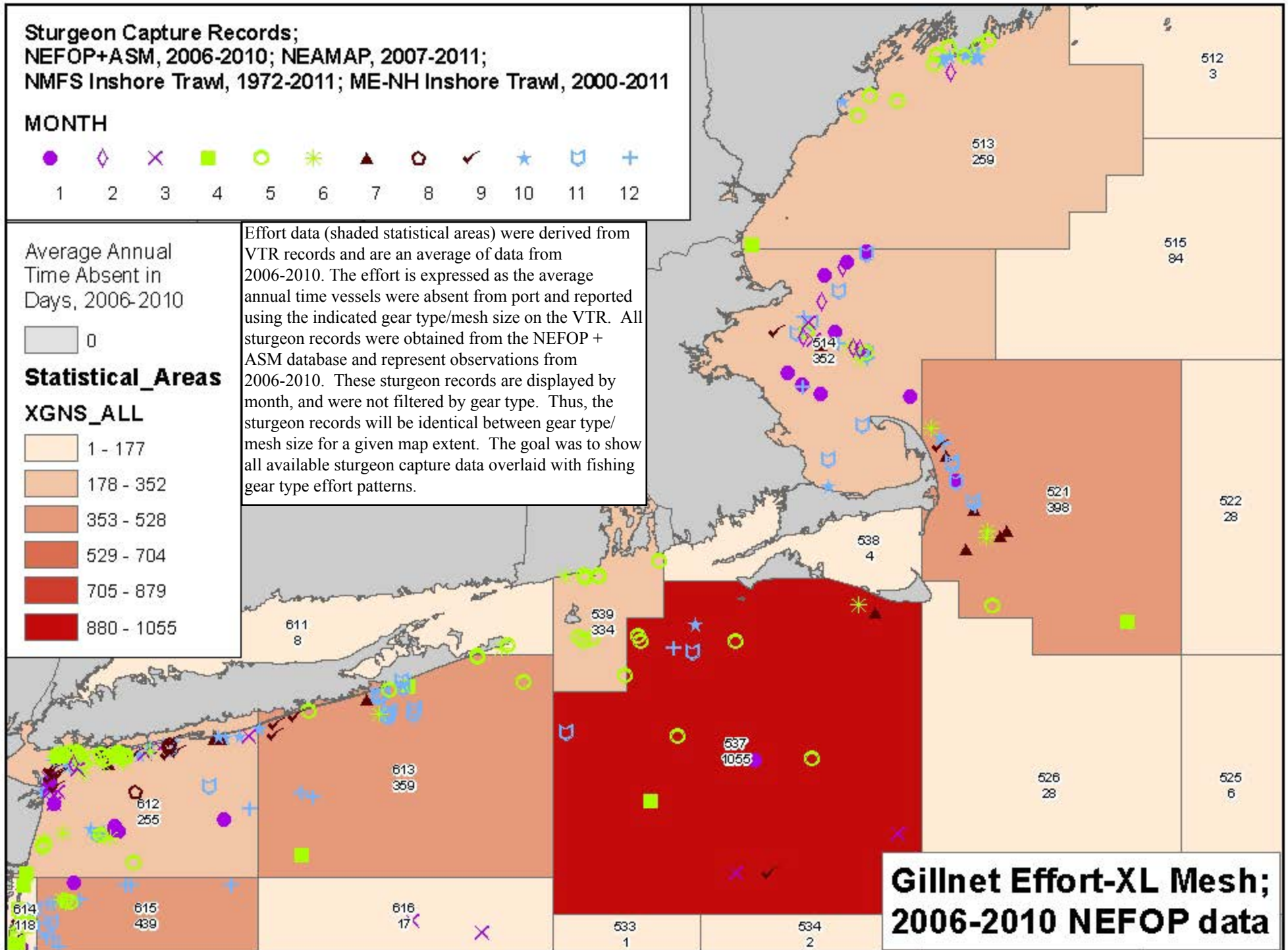


**Statistical\_Areas**

**XGNS\_ALL**



Effort data (shaded statistical areas) were derived from VTR records and are an average of data from 2006-2010. The effort is expressed as the average annual time vessels were absent from port and reported using the indicated gear type/mesh size on the VTR. All sturgeon records were obtained from the NEFOP + ASM database and represent observations from 2006-2010. These sturgeon records are displayed by month, and were not filtered by gear type. Thus, the sturgeon records will be identical between gear type/mesh size for a given map extent. The goal was to show all available sturgeon capture data overlaid with fishing gear type effort patterns.



**Sturgeon Capture Records;  
NEFOP+ASM, 2006-2010; NEAMAP, 2007-2011;  
NMFS Inshore Trawl, 1972-2011; ME-NH Inshore Trawl, 2000-2011**

**MONTH**



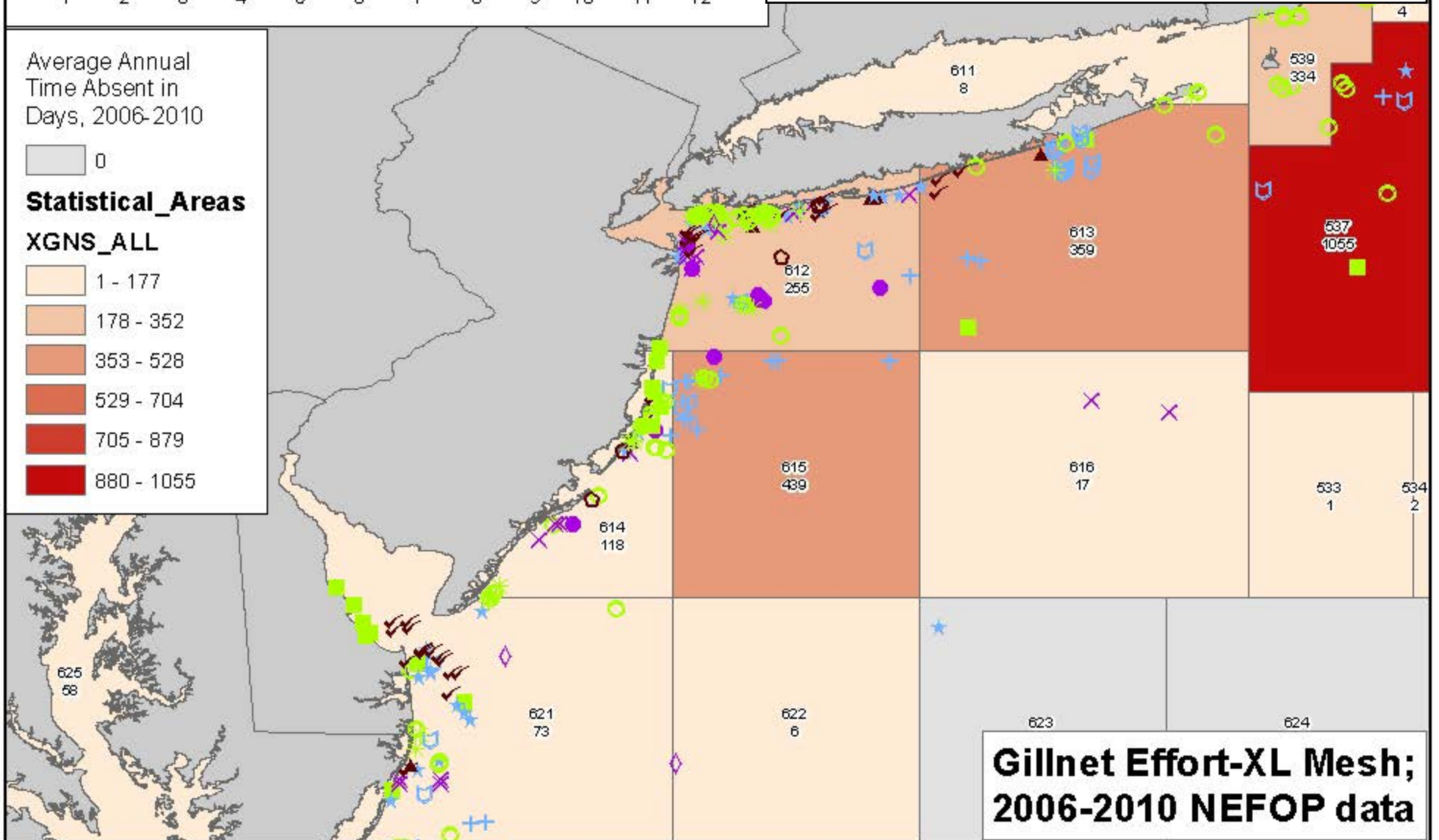
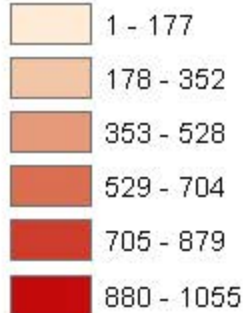
Effort data (shaded statistical areas) were derived from VTR records and are an average of data from 2006-2010. The effort is expressed as the average annual time vessels were absent from port and reported using the indicated gear type/mesh size on the VTR. All sturgeon records were obtained from the NEFOP + ASM database and represent observations from 2006-2010. These sturgeon records are displayed by month, and were not filtered by gear type. Thus, the sturgeon records will be identical between gear type/mesh size for a given map extent. The goal was to show all available sturgeon capture data overlaid with fishing gear type effort patterns.

Average Annual Time Absent in Days, 2006-2010



**Statistical\_Areas**

**XGNS\_ALL**



**Gillnet Effort-XL Mesh;  
2006-2010 NEFOP data**



**Sturgeon Capture Records;**  
 NEFOP+ASM, 2006-2010; NEAMAP, 2007-2011;  
 NMFS Inshore Trawl, 1972-2011; ME-NH Inshore Trawl, 2000-2011

**MONTH**

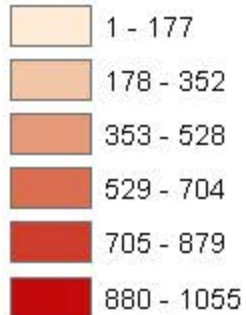


Average Annual  
 Time Absent in  
 Days, 2006-2010

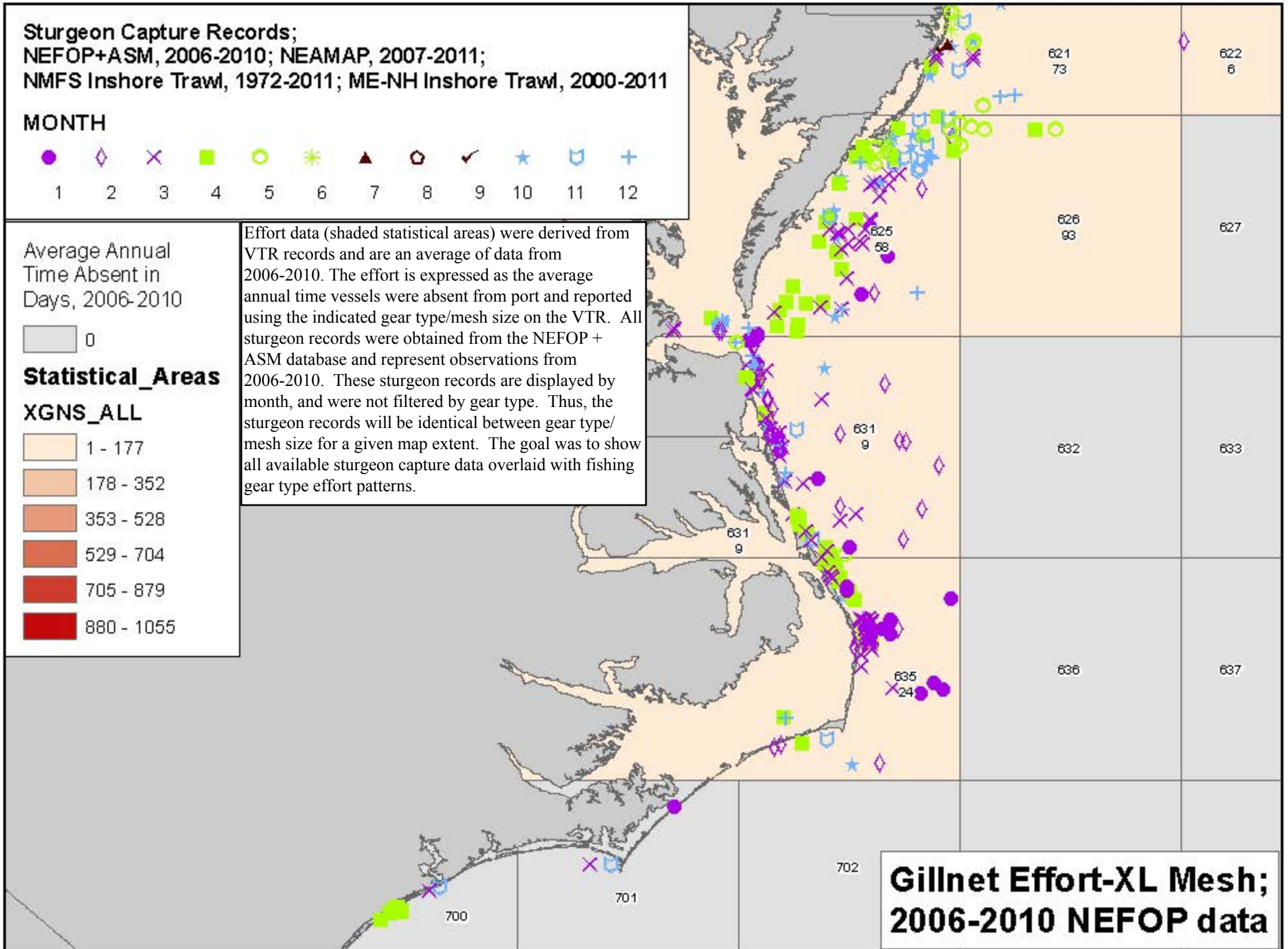


**Statistical\_Areas**

**XGNS\_ALL**



Effort data (shaded statistical areas) were derived from VTR records and are an average of data from 2006-2010. The effort is expressed as the average annual time vessels were absent from port and reported using the indicated gear type/mesh size on the VTR. All sturgeon records were obtained from the NEFOP + ASM database and represent observations from 2006-2010. These sturgeon records are displayed by month, and were not filtered by gear type. Thus, the sturgeon records will be identical between gear type/mesh size for a given map extent. The goal was to show all available sturgeon capture data overlaid with fishing gear type effort patterns.



**Gillnet Effort-XL Mesh;  
 2006-2010 NEFOP data**

**Sturgeon Capture Records;  
NEFOP+ASM, 2006-2010; NEAMAP, 2007-2011;  
NMFS Inshore Trawl, 1972-2011; ME-NH Inshore Trawl, 2000-2011**

**MONTH**

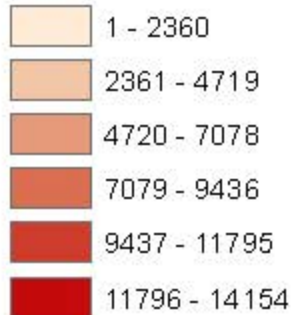


**Average Annual  
Time Absent in  
Days, 2006-2010**

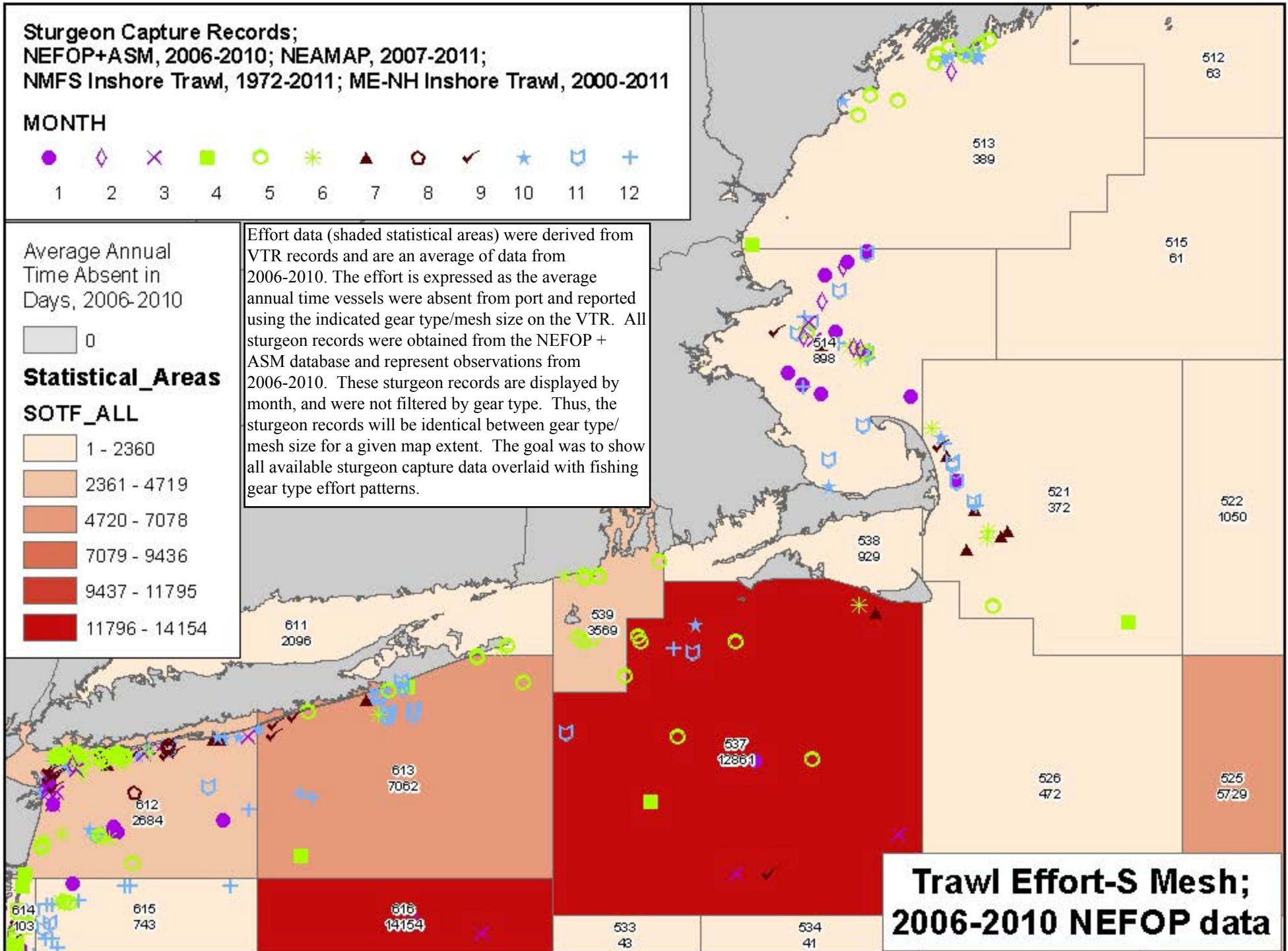


**Statistical\_Areas**

**SOTF\_ALL**



Effort data (shaded statistical areas) were derived from VTR records and are an average of data from 2006-2010. The effort is expressed as the average annual time vessels were absent from port and reported using the indicated gear type/mesh size on the VTR. All sturgeon records were obtained from the NEFOP + ASM database and represent observations from 2006-2010. These sturgeon records are displayed by month, and were not filtered by gear type. Thus, the sturgeon records will be identical between gear type/mesh size for a given map extent. The goal was to show all available sturgeon capture data overlaid with fishing gear type effort patterns.



**Sturgeon Capture Records;  
NEFOP+ASM, 2006-2010; NEAMAP, 2007-2011;  
NMFS Inshore Trawl, 1972-2011; ME-NH Inshore Trawl, 2000-2011**

**MONTH**



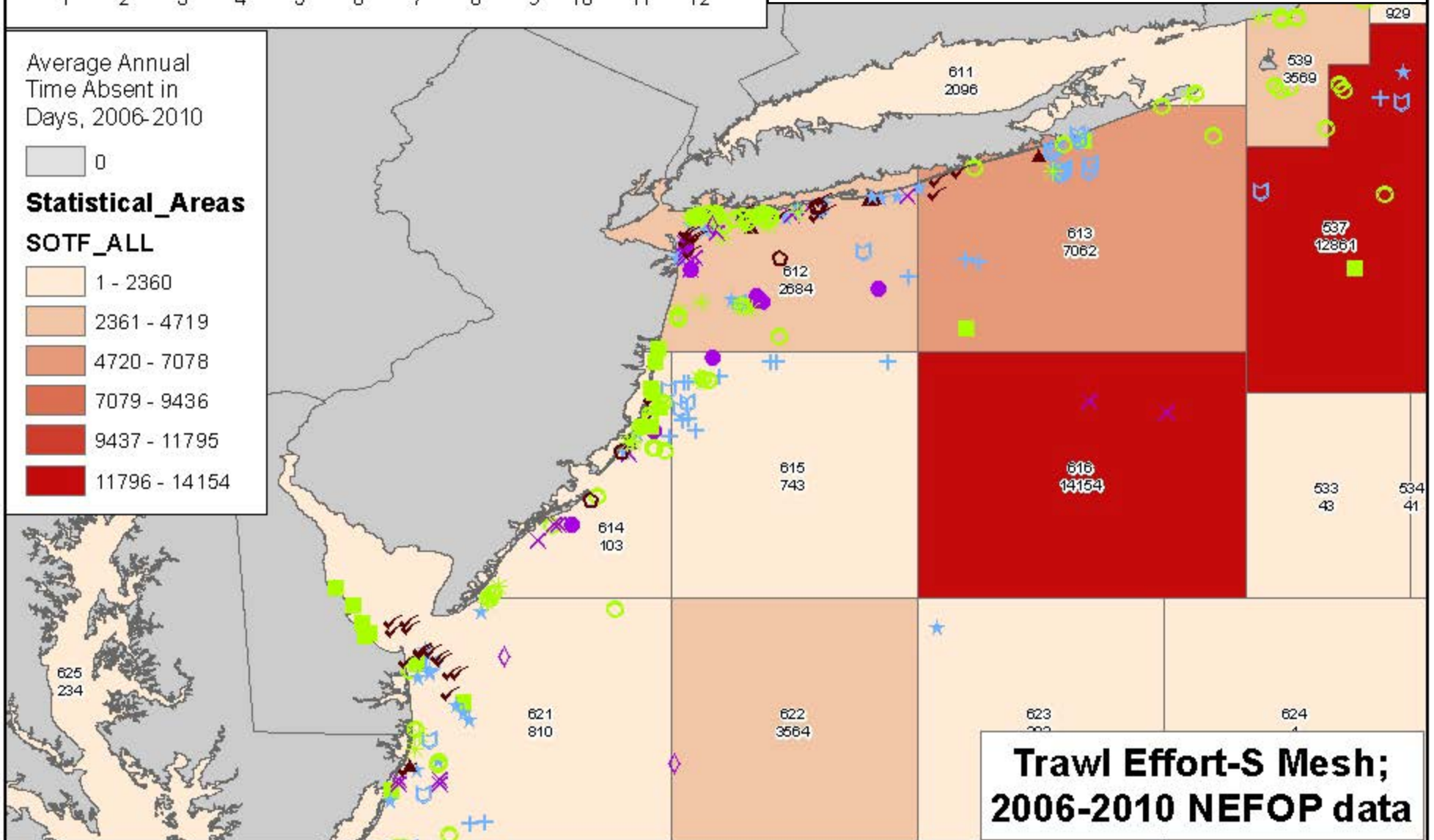
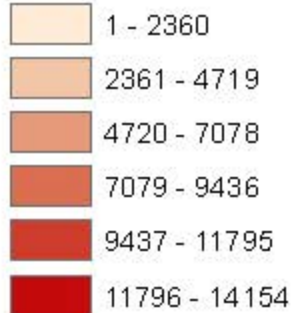
Effort data (shaded statistical areas) were derived from VTR records and are an average of data from 2006-2010. The effort is expressed as the average annual time vessels were absent from port and reported using the indicated gear type/mesh size on the VTR. All sturgeon records were obtained from the NEFOP + ASM database and represent observations from 2006-2010. These sturgeon records are displayed by month, and were not filtered by gear type. Thus, the sturgeon records will be identical between gear type/mesh size for a given map extent. The goal was to show all available sturgeon capture data overlaid with fishing gear type effort patterns.

Average Annual Time Absent in Days, 2006-2010



**Statistical\_Areas**

**SOTF\_ALL**



**Trawl Effort-S Mesh;  
2006-2010 NEFOP data**

**Sturgeon Capture Records;  
NEFOP+ASM, 2006-2010; NEAMAP, 2007-2011;  
NMFS Inshore Trawl, 1972-2011; ME-NH Inshore Trawl, 2000-2011**

**MONTH**

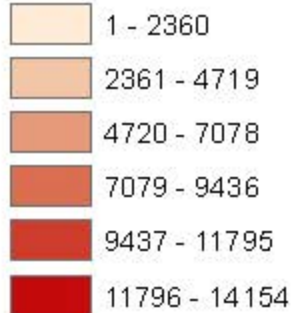


Average Annual  
Time Absent in  
Days, 2006-2010

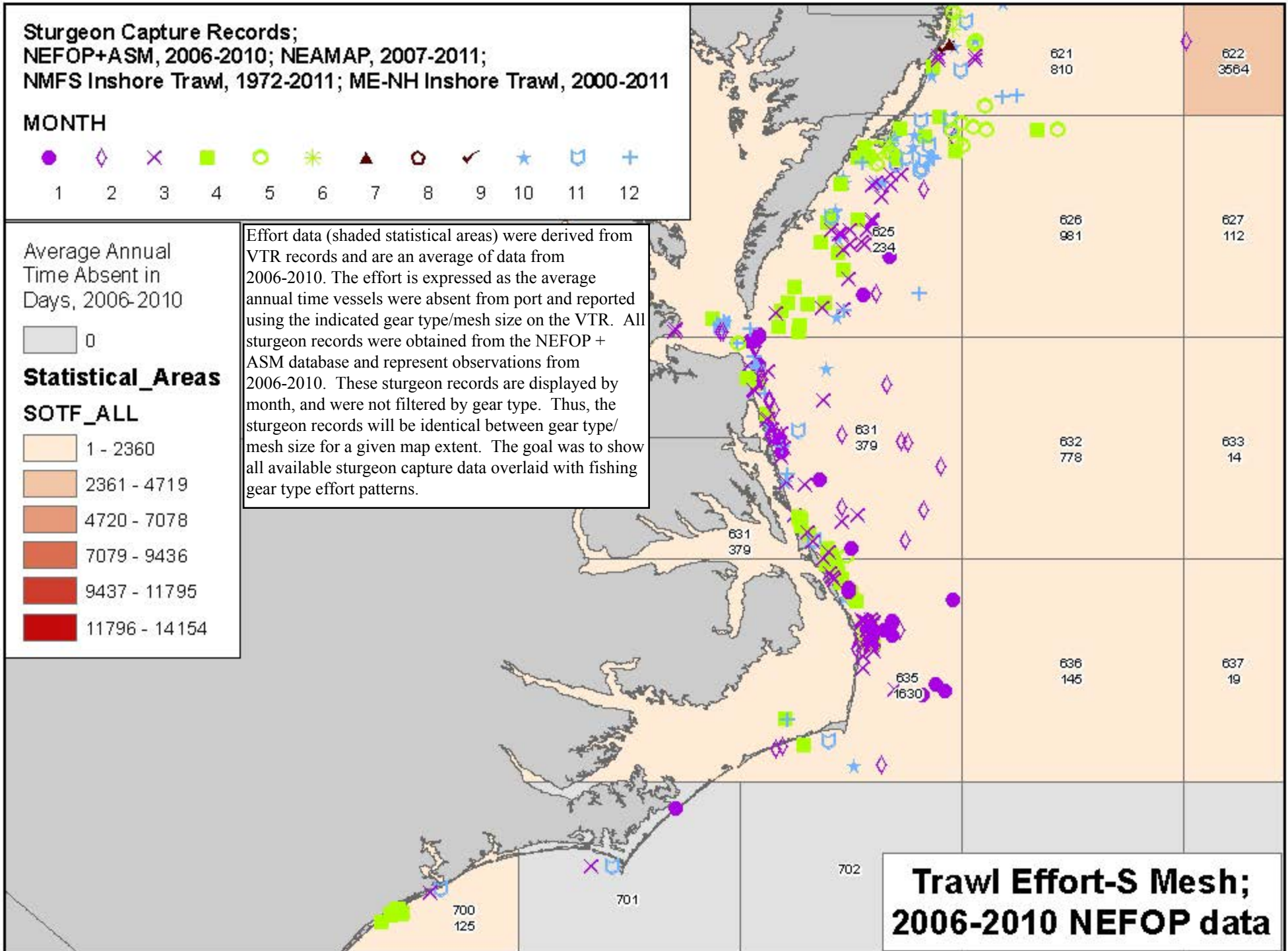


**Statistical\_Areas**

**SOTF\_ALL**



Effort data (shaded statistical areas) were derived from VTR records and are an average of data from 2006-2010. The effort is expressed as the average annual time vessels were absent from port and reported using the indicated gear type/mesh size on the VTR. All sturgeon records were obtained from the NEFOP + ASM database and represent observations from 2006-2010. These sturgeon records are displayed by month, and were not filtered by gear type. Thus, the sturgeon records will be identical between gear type/mesh size for a given map extent. The goal was to show all available sturgeon capture data overlaid with fishing gear type effort patterns.



**Trawl Effort-S Mesh;  
2006-2010 NEFOP data**

**Sturgeon Capture Records;  
NEFOP+ASM, 2006-2010; NEAMAP, 2007-2011;  
NMFS Inshore Trawl, 1972-2011; ME-NH Inshore Trawl, 2000-2011**

**MONTH**

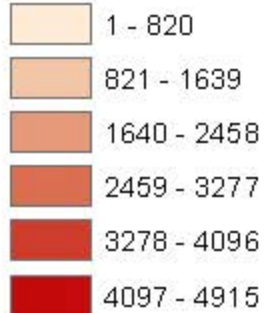


**Average Annual  
Time Absent in  
Days, 2006-2010**

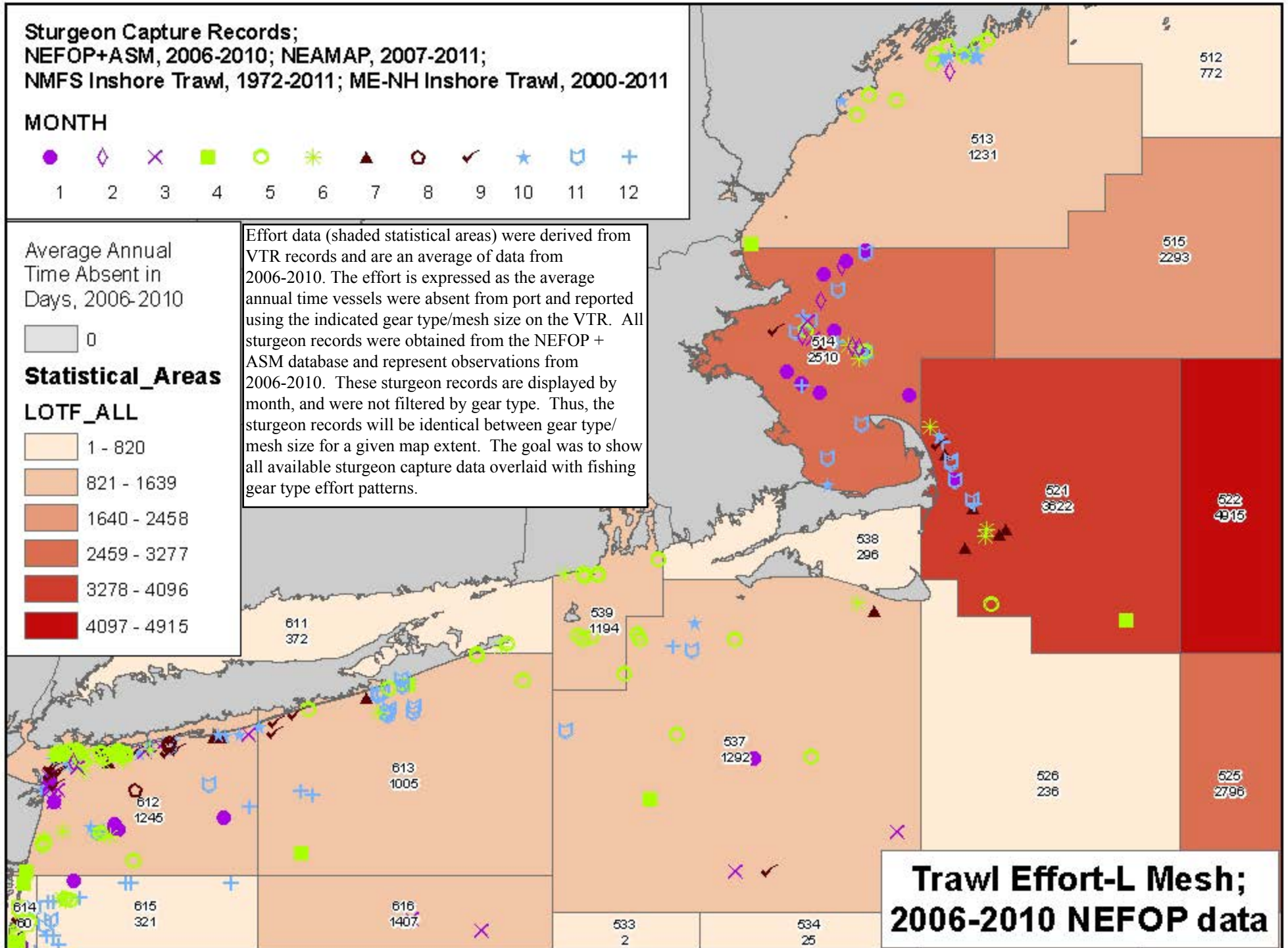


**Statistical\_Areas**

**LOTF\_ALL**



Effort data (shaded statistical areas) were derived from VTR records and are an average of data from 2006-2010. The effort is expressed as the average annual time vessels were absent from port and reported using the indicated gear type/mesh size on the VTR. All sturgeon records were obtained from the NEFOP + ASM database and represent observations from 2006-2010. These sturgeon records are displayed by month, and were not filtered by gear type. Thus, the sturgeon records will be identical between gear type/mesh size for a given map extent. The goal was to show all available sturgeon capture data overlaid with fishing gear type effort patterns.



**Trawl Effort-L Mesh;  
2006-2010 NEFOP data**

**Sturgeon Capture Records;  
NEFOP+ASM, 2006-2010; NEAMAP, 2007-2011;  
NMFS Inshore Trawl, 1972-2011; ME-NH Inshore Trawl, 2000-2011**

**MONTH**



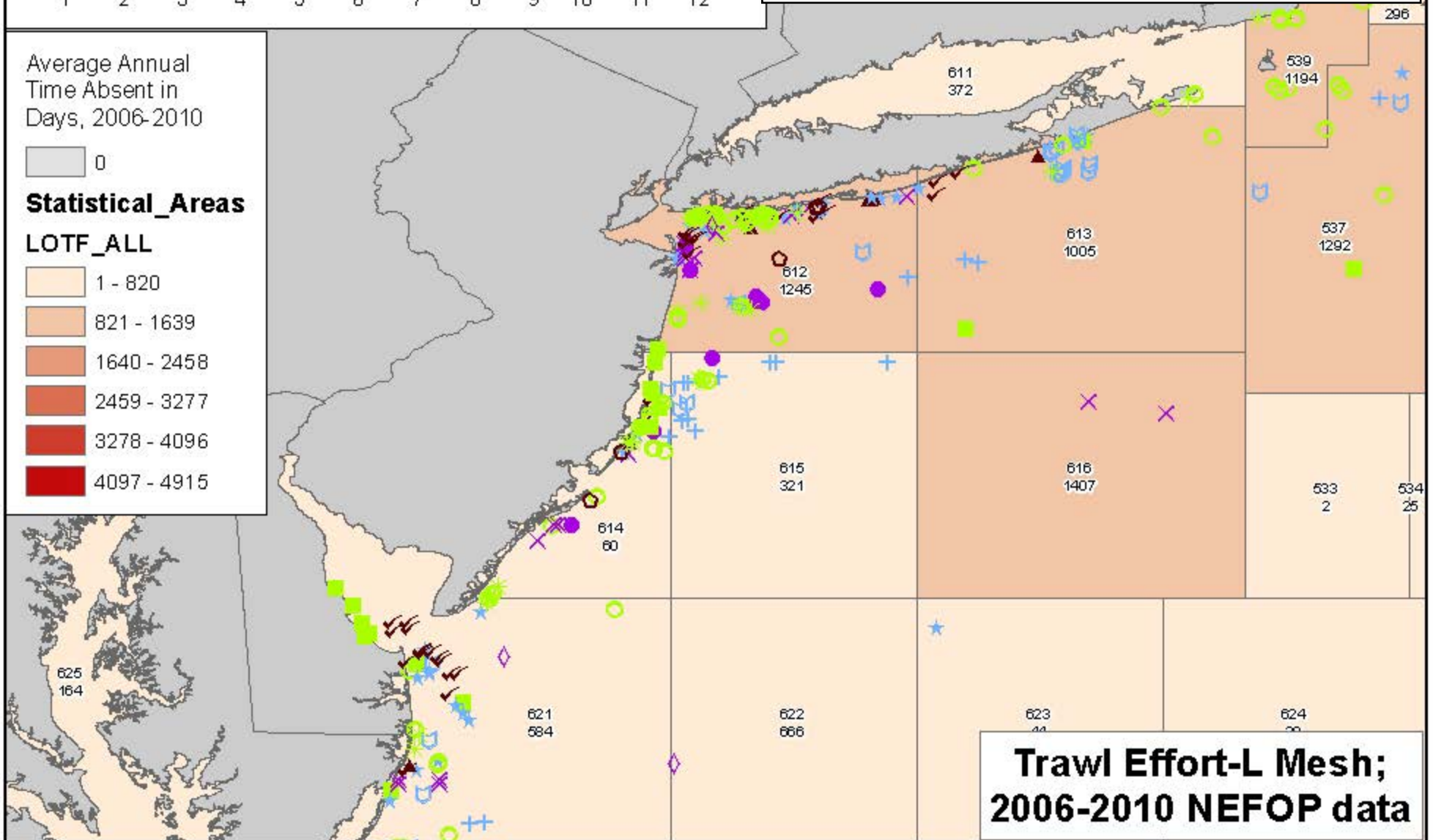
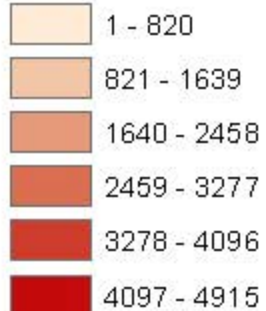
Effort data (shaded statistical areas) were derived from VTR records and are an average of data from 2006-2010. The effort is expressed as the average annual time vessels were absent from port and reported using the indicated gear type/mesh size on the VTR. All sturgeon records were obtained from the NEFOP + ASM database and represent observations from 2006-2010. These sturgeon records are displayed by month, and were not filtered by gear type. Thus, the sturgeon records will be identical between gear type/mesh size for a given map extent. The goal was to show all available sturgeon capture data overlaid with fishing gear type effort patterns.

Average Annual  
Time Absent in  
Days, 2006-2010



**Statistical\_Areas**

**LOTF\_ALL**



**Trawl Effort-L Mesh;  
2006-2010 NEFOP data**

**Sturgeon Capture Records;  
NEFOP+ASM, 2006-2010; NEAMAP, 2007-2011;  
NMFS Inshore Trawl, 1972-2011; ME-NH Inshore Trawl, 2000-2011**

**MONTH**

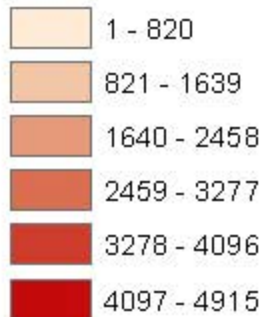


**Average Annual  
Time Absent in  
Days, 2006-2010**

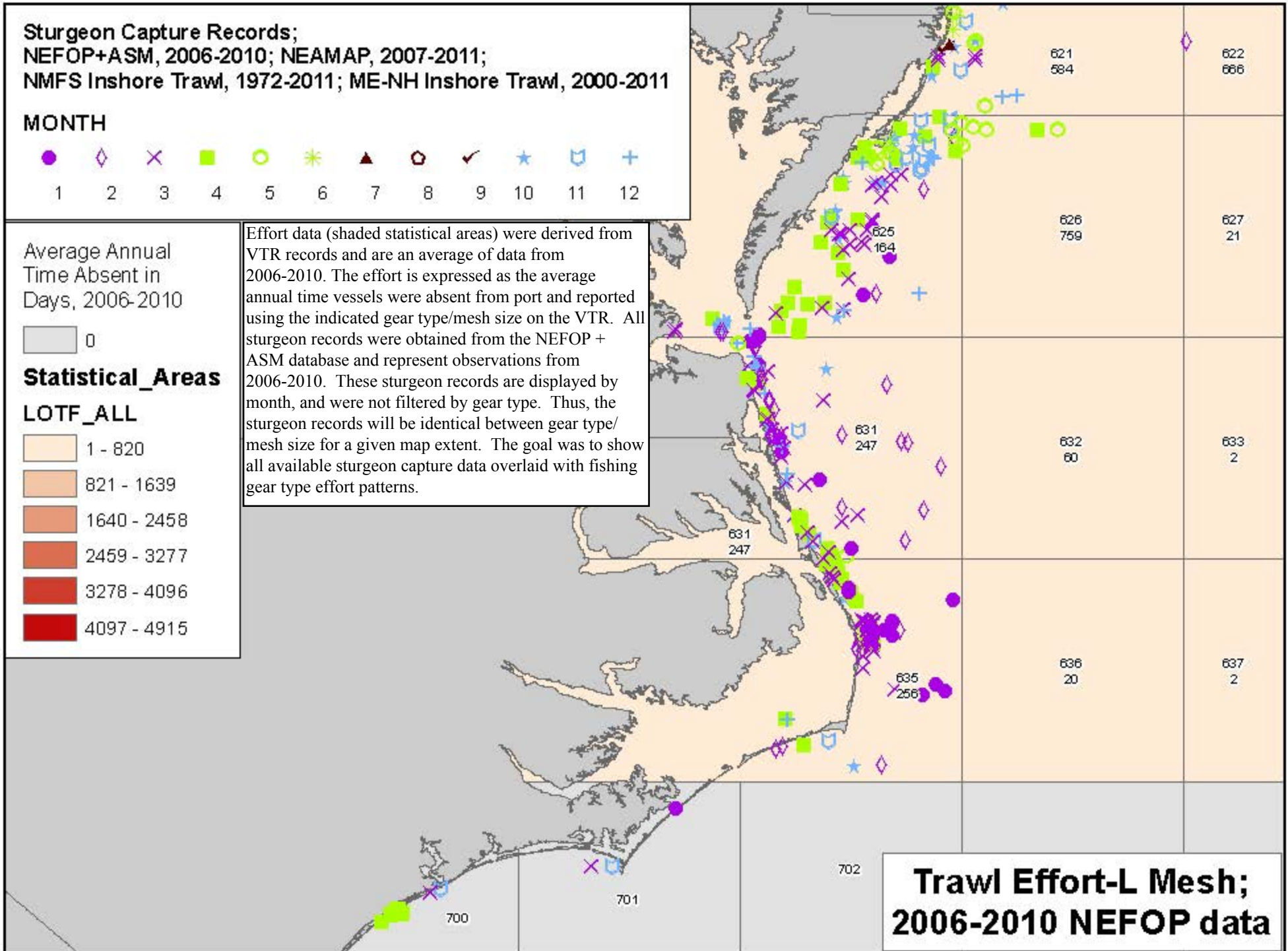


**Statistical\_Areas**

**LOTF\_ALL**



Effort data (shaded statistical areas) were derived from VTR records and are an average of data from 2006-2010. The effort is expressed as the average annual time vessels were absent from port and reported using the indicated gear type/mesh size on the VTR. All sturgeon records were obtained from the NEFOP + ASM database and represent observations from 2006-2010. These sturgeon records are displayed by month, and were not filtered by gear type. Thus, the sturgeon records will be identical between gear type/mesh size for a given map extent. The goal was to show all available sturgeon capture data overlaid with fishing gear type effort patterns.



**Trawl Effort-L Mesh;  
2006-2010 NEFOP data**